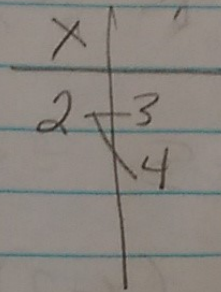
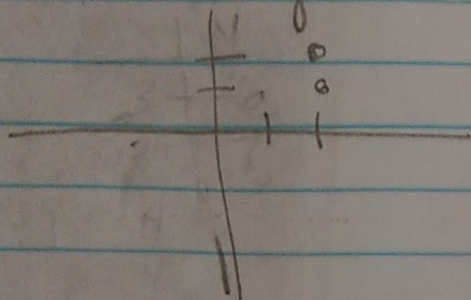


26. $R: (-\infty, \infty)$

27. $R: (-\infty, -2]$

28. when x goes to ∞



not a function

29. vertical line test

30. Each x has one y

31. mapping

32.) $x = 3y - 1$

$$\frac{x + 1}{3} = \frac{3y}{3}$$

$$f^{-1}(x) = \frac{1}{3}x + \frac{1}{3}$$

33.) $x = \frac{1}{2}y + 7$

$$x - 7 = \frac{1}{2}y \cdot \frac{2}{1}$$

$$2(x - 7)$$

$$2x - 14 = f^{-1}(x)$$