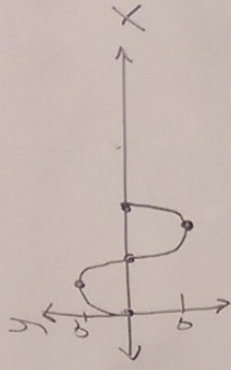


Trig. Functions

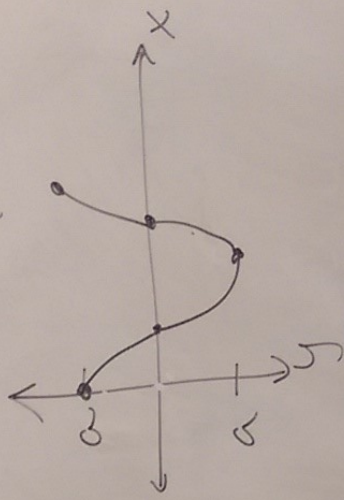


Zero - max - zero - min - zero - "one period"

$$y = a \sin \frac{b}{T} x$$

$$y = a \cos \frac{b}{T} x$$

max - zero - min - zero - "one period" cycle



amplitude = $|a|$
 how high $\frac{\text{max}}{\text{low}}$ $\frac{\text{min}}$
 on the coordinate

= period = how far it will take one cycle

$$\frac{2\pi}{|b|}$$

ordinates

MS conversions

equations

Complex Numbers

divided practice

-8

=

=

$\frac{\pi}{4} =$

0-11 → Graph

7, 18, 19, 21