

theta (measure)

ex #1 $y = 4 \sin 3\theta$

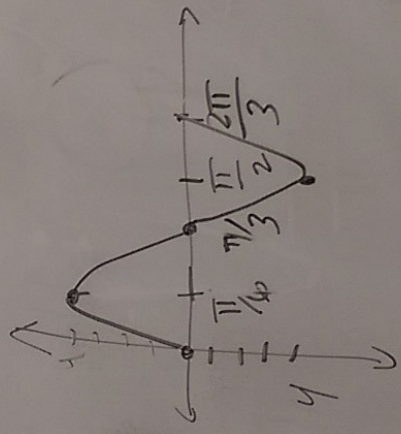
$a = 4$ $b = 3$

period = $\frac{2\pi}{|3|} = \frac{2\pi}{3}$

(period) = $\frac{1}{4} \cdot \frac{2\pi}{3} = \frac{\pi}{6}$

(period) = $\frac{1}{2} \cdot \frac{2\pi}{3} = \frac{\pi}{3}$

(period) = $\frac{3}{4} \cdot \frac{2\pi}{3} = \frac{\pi}{2}$



ex. #2

$y = -2 \cos(\frac{1}{2}\theta)$

$a = 2$ $b = \frac{1}{2}$

period = $\frac{2\pi}{|1/2|} =$

